

## Finger Movement CP

- swiveling movement and parallel top jaw-

### Characteristics:

- swiveling movement of fingers and parallel guided top jaws
- available for all our hexagonal or rectangular grippers
- universal top jaws at the fingertips
- customized top jaws available on request
- adjustable in finger length, amount and position
- inside and outside gripper
- lubrication and maintenance free slide bearings
- constant hollow tube (Ø80mm)
- self-locking free
- stepless stroke adjustment with shock absorbing action, or
- object retention at blackout through gas spring multiple position monitoring through proximity switch, optional

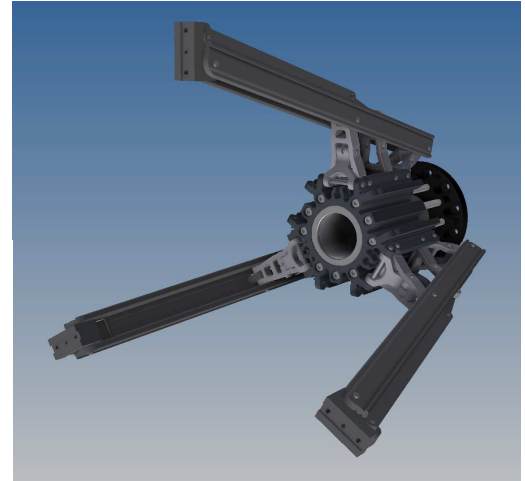
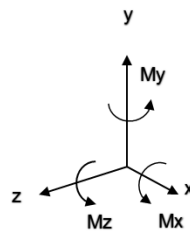


Image: Type C110-300250-CP-PNO-00

The technical data correspond to those of the finger movement "C" of the respective gripper:

Technical Data						
Movement CP		Finger Length (F)**				
Gripper B02	Finger Length	0 mm	20 mm	40 mm	60 mm	80 mm
	Stroke [mm]	32	43	54	64	80
	Gripping Force* [N]	201 to 965	165 to 527	140 to 362	122 to 276	107 to 223
Gripper C03	Finger Length	0 mm	20 mm	40 mm	60 mm	80 mm
	Stroke [mm]	32	43	54	64	80
	Gripping Force* [N]	338 to 1.619	277 to 884	235 to 608	204 to 463	180 to 374
Gripper E03	Finger Length	0 mm	40 mm	60 mm	80 mm	100 mm
	Stroke [mm]	30	46	53	61	69
	Gripping Force* [N]	274 to 1.681	208 to 633	185 to 482	167 to 390	152 to 327
Gripper A06 / C06	Finger Length	0 mm	40 mm	60 mm	80 mm	100 mm
	Stroke [mm]	59	91	106	124	139
	Gripping Force* [N]	657 to 4.030	498 to 1.517	445 to 1.156	401 to 934	366 to 784
Gripper B10 / C10	Finger Length	0 mm	50 mm	100 mm	150 mm	200 mm
	Stroke [mm]	112	158	204	250	296
	Gripping Force* [N]	846 to 7.178	684 to 2.914	574 to 1.848	494 to 1.354	434 to 1.068
Gripper C16	Finger Length	0 mm	100 mm	200 mm	300 mm	400 mm
	Stroke [mm]	281	375	469	563	659
	Gripping Force* [kN]	2,4 to 39,6	2 to 15,8	1,7 to 9,9	1,5 to 7,2	1,3 to 5,6

\* higher gripping force always at finger position "open" (data referring to 6 bar air pressure)

\*\* customized finger length available on request



**address:**  
**GMG** – Gesellschaft für modulare Greifersysteme mbH  
 Rödingerweg 8H  
 D-59494 Soest  
 Germany

**phone:**  
 +49 (0)2921 – 4062  
**fax:**  
 +49 (0)2921 - 4042

**e-mail:**  
 info@gmg-system.com  
**homepage:**  
 http://www.gmg-system.com

### Type Basic Shapes



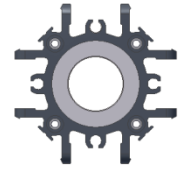
B02



C03



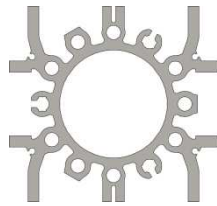
E03



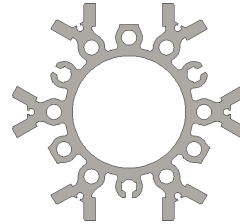
A06



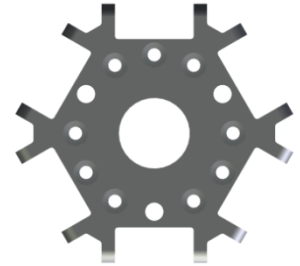
C06



B10



C10



C16

### Finger Movement CP

#### Shape CP open

*(Finger sviveling open, top jaws parallel)*



#### Shape CP closed

*(Finger sviveling closed, top jaws parallel)*

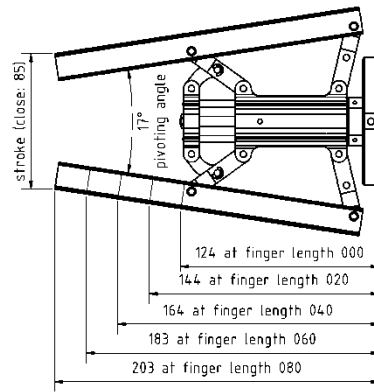
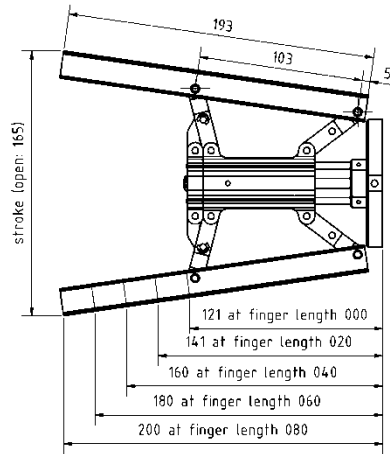


**address:**  
**GMG** – Gesellschaft für modulare  
 Greifersysteme mbH  
 Rodingerweg 8H  
 D-59494 Soest  
 Germany

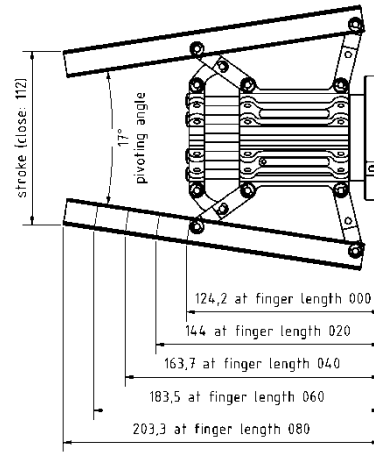
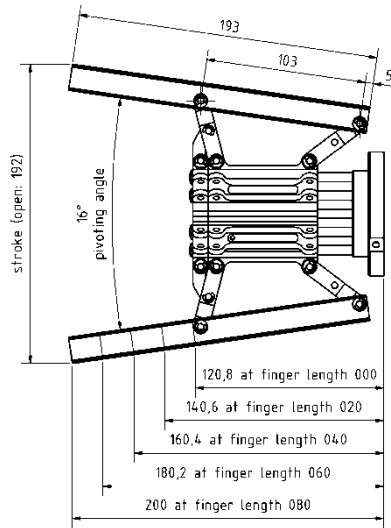
**phone:**  
 +49 (0)2921 – 4062  
**fax:**  
 +49 (0)2921 - 4042

**e-mail:**  
 info@gmg-system.com  
**homepage:**  
 http://www.gmg-system.com

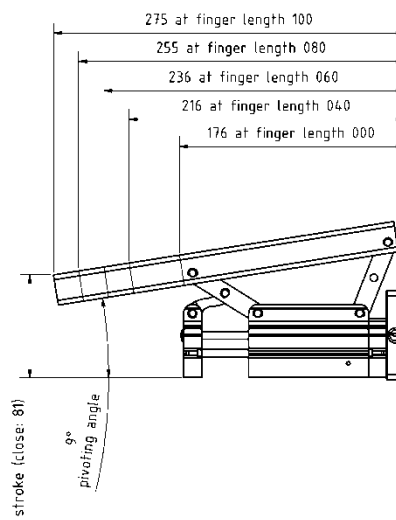
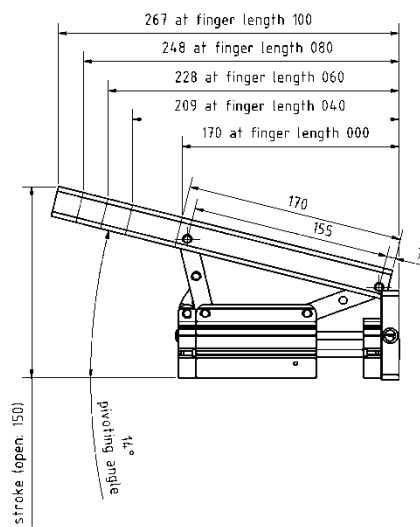
B02



C03



E03

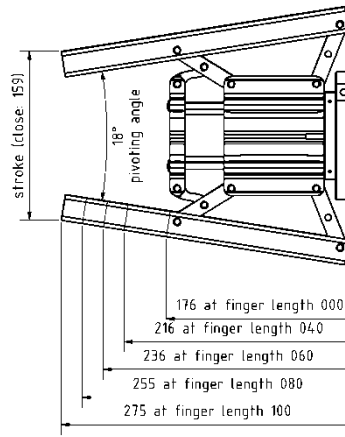
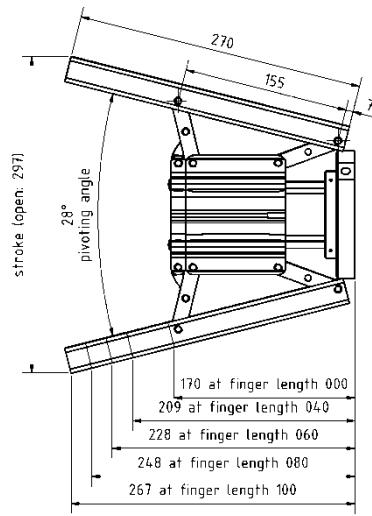


address:  
**GMG** – Gesellschaft für modulare  
 Greifersysteme mbH  
 Rödingerweg 8H  
 D-59494 Soest  
 Germany

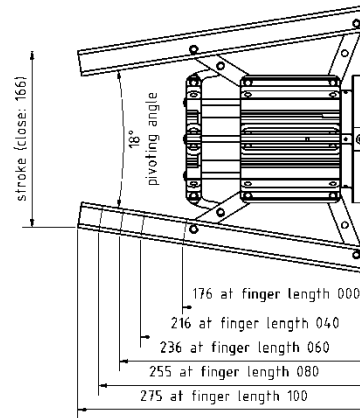
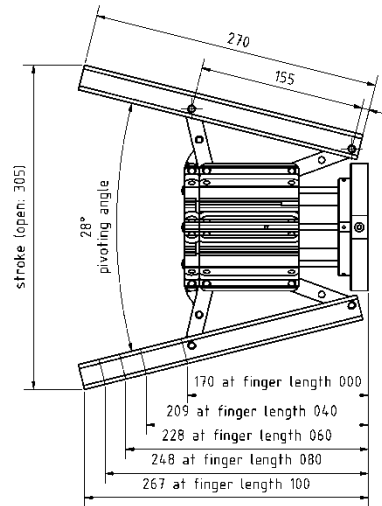
phone:  
 +49 (0)2921 – 4062  
 fax:  
 +49 (0)2921 - 4042

e-mail:  
 info@gmg-system.com  
 homepage:  
 http://www.gmg-system.com

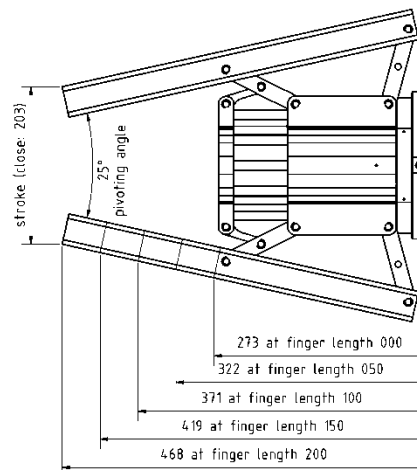
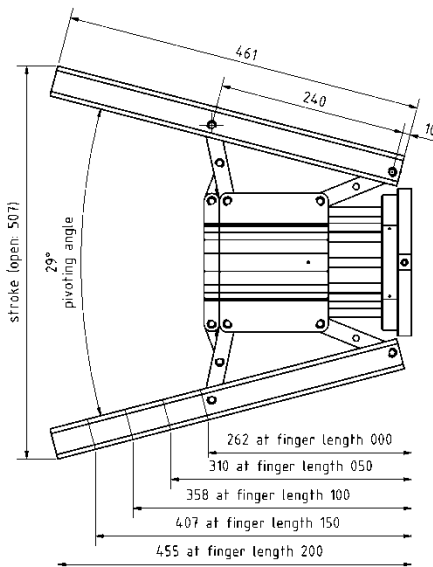
A06



C06



B10



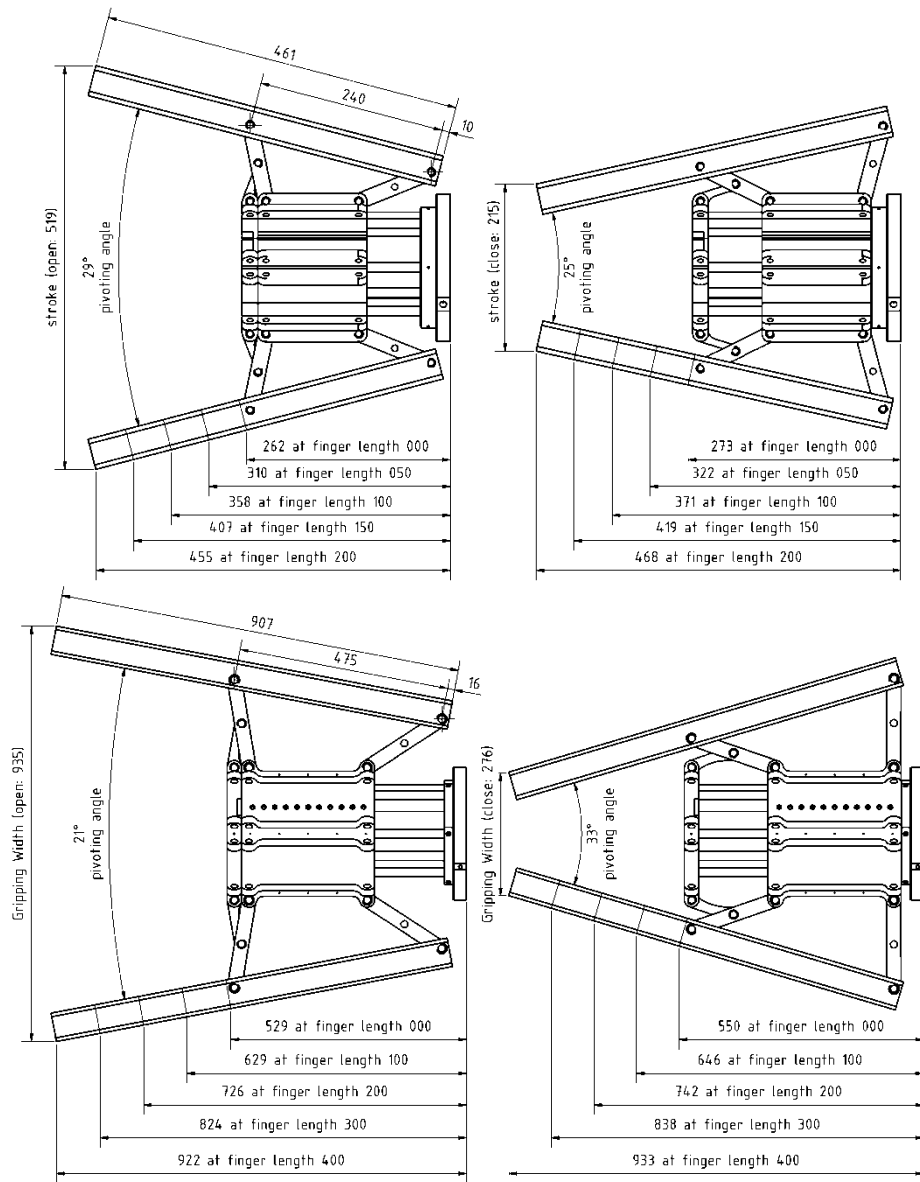
address:  
**GMG** – Gesellschaft für modulare  
 Greifersysteme mbH  
 Rödingerweg 8H  
 D-59494 Soest  
 Germany

phone:  
 +49 (0)2921 – 4062  
 fax:  
 +49 (0)2921 - 4042

e-mail:  
 info@gmg-system.com  
 homepage:  
 http://www.gmg-system.com

C10

C16



The position measurement for the jaw carrier is calculated as follows:

<b>CP02 / CP03:</b>	Finger length + 10 mm in the Z direction
<b>CP06:</b>	Finger length + 13 mm in the Z direction
<b>CP10:</b>	Finger length + 16 mm in the Z direction
<b>CP16:</b>	Finger length + 44 mm in the Z direction



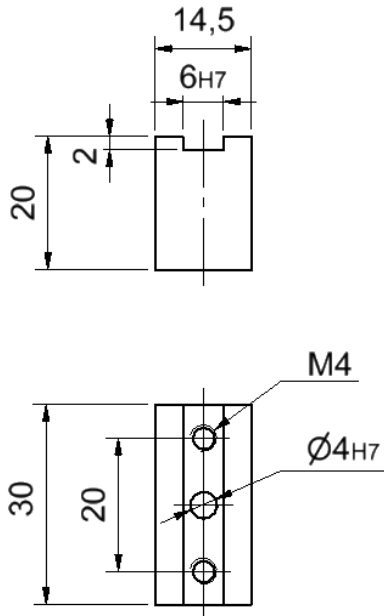
**address:**  
**MG** – Gesellschaft für modulare Greifersysteme mbH  
 Rödingerweg 8H  
 D-59494 Soest  
 Germany

**phone:**  
 +49 (0)2921 – 4062  
**fax:**  
 +49 (0)2921 - 4042

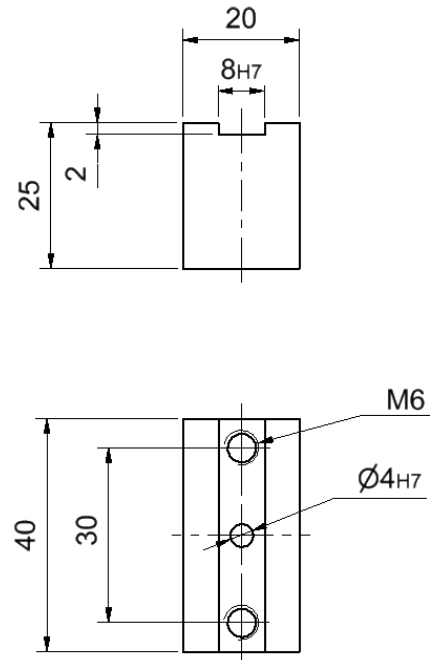
**e-mail:**  
 info@gmg-system.com  
**homepage:**  
 http://www.gmg-system.com

## Measures of universal top jaws

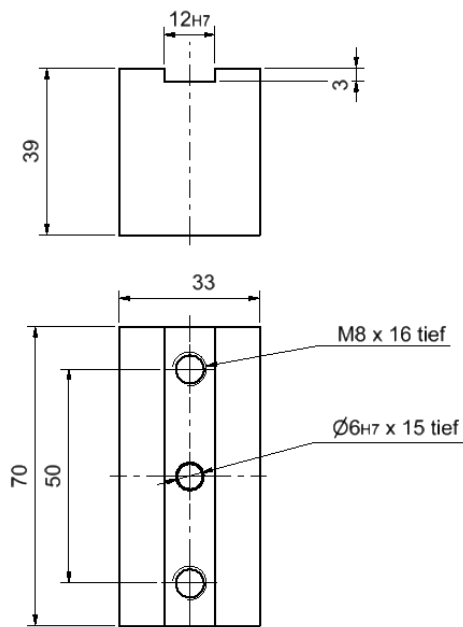
Top Jaw CP02 / CP03



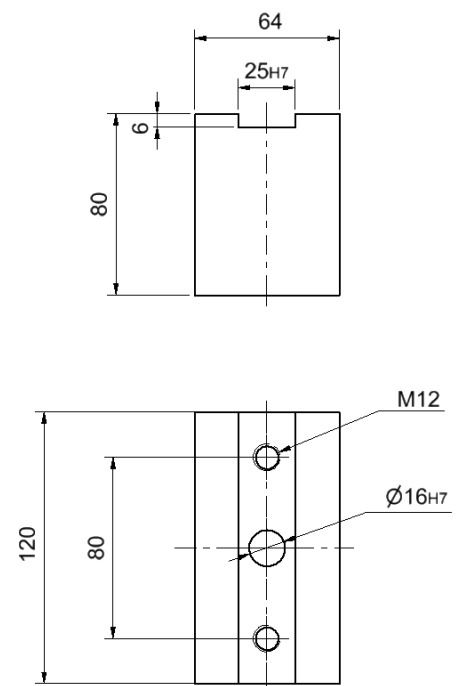
Top Jaw CP06



Top Jaw CP 10



Top Jaw CP16



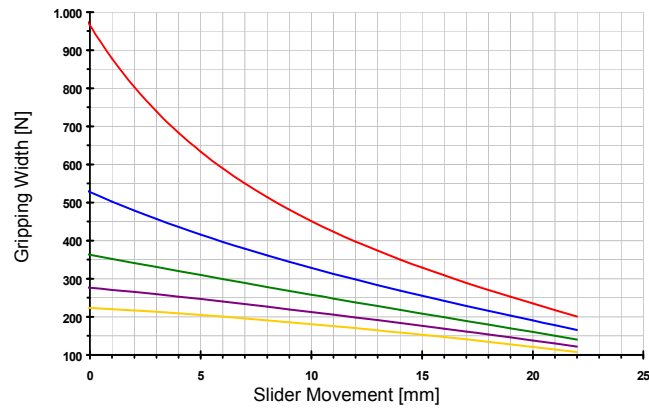
address:  
**GMG** – Gesellschaft für modulare  
 Greifersysteme mbH  
 Rödingerweg 8H  
 D-59494 Soest  
 Germany

phone:  
 +49 (0)2921 – 4062  
 fax:  
 +49 (0)2921 - 4042

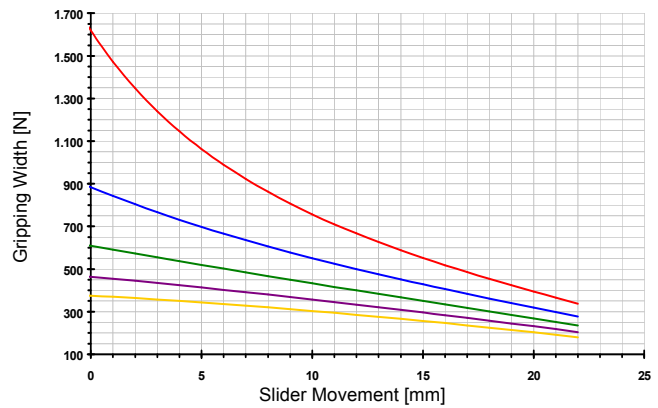
e-mail:  
 info@gmg-system.com  
 homepage:  
 http://www.gmg-system.com

## Force- and Gripping-Width-Diagram

**B02 Movement CP**

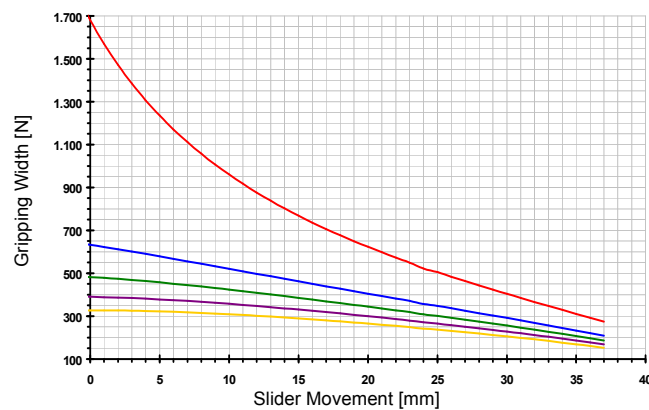


**C03 Movement CP**

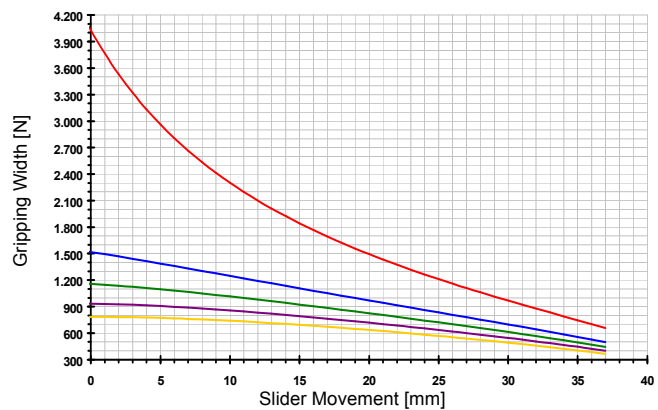


— 0 mm      — 20 mm      — 40 mm      — 60 mm      — 80 mm

**E03 Movement CP**

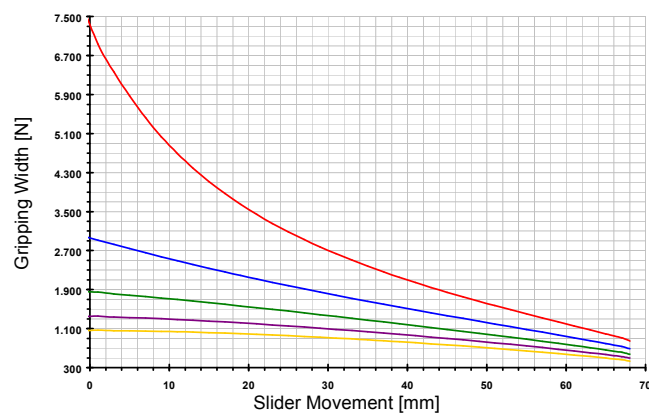


**A06 / C06 Movement CP**

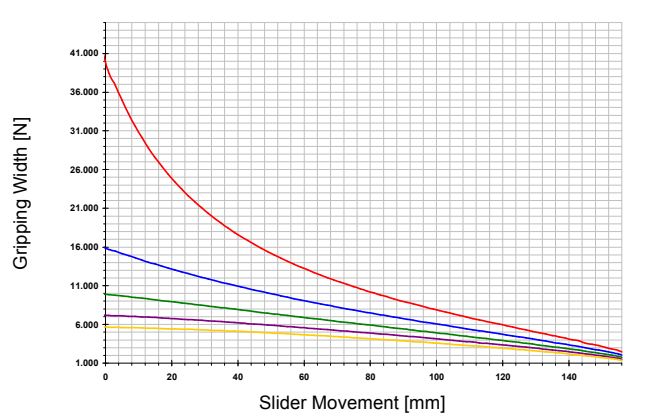


— 0 mm      — 40 mm      — 60 mm      — 80 mm      — 100 mm

**B10 / C10 Movement CP**



**C16 Movement CP**



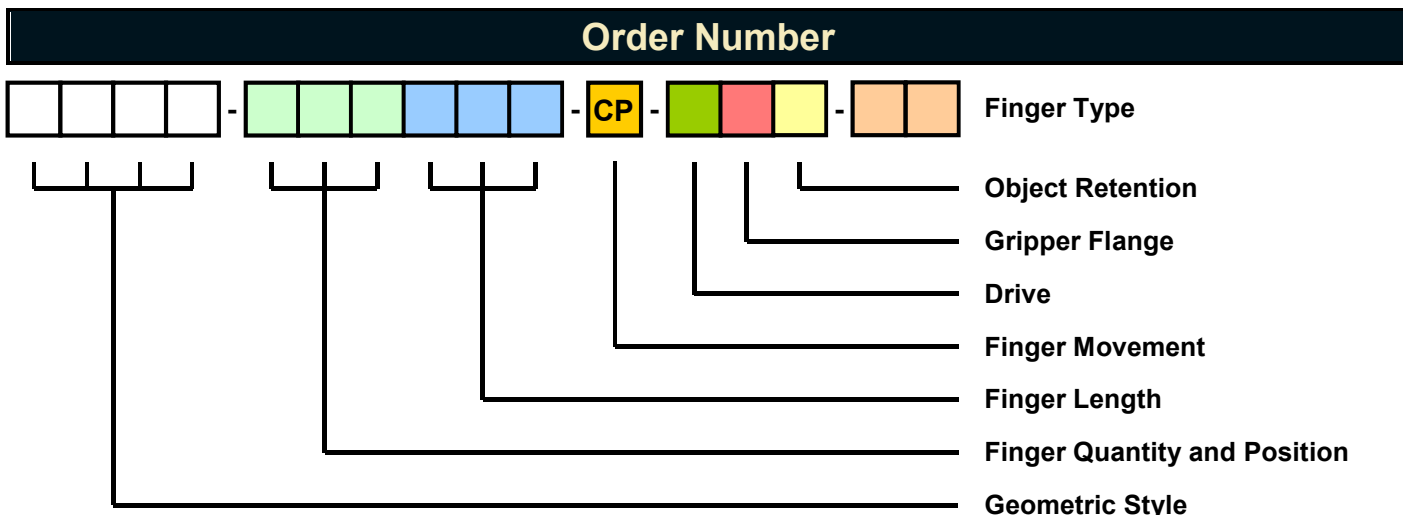
— 0 mm      — 50 / 100 mm      — 100 / 200 mm      — 150 / 300 mm      — 200 / 400 mm



**address:**  
**GMG** – Gesellschaft für modulare  
 Greifersysteme mbH  
 Rödingerweg 8H  
 D-59494 Soest  
 Germany

**phone:**  
 +49 (0)2921 – 4062  
**fax:**  
 +49 (0)2921 - 4042

**e-mail:**  
 info@gmg-system.com  
**homepage:**  
 http://www.gmg-system.com



**Finger Quantity and Position**

View table in data sheet of the specific gripper

<b>Finger Length</b>	
	Length (F)
<b>Standard</b>	0 mm
	20 mm
	...
	Special Length

	Ident.
	<b>000</b>
	<b>020</b>
	...
	<b>Declaration in mm</b>

<b>Finger Movement</b>	
Style	Ident.
parallel open parallel close	<b>A</b>
parallel open swiveling close	<b>B</b>
swiveling open swiveling close	<b>C</b>
Parallel top jaw movement	<b>CP</b>
Combination of Finger Movement Styles*	<b>K</b>

\* on request

<b>Gripper Flange</b>	
Style	Ident.
Normal	<b>N</b>
Rotary Feedthrough (in flange integrated)	<b>D</b>

<b>Drive</b>	
Style	Ident.
Pneumatic	<b>P</b>
Electrical	<b>E</b>

<b>Object Retention at Blackout</b>	
Style	Ident.
Without Object Retention	<b>O</b>
Retention "Finger Closing"	<b>Z</b>
Retention "Finger Opening"	<b>A</b>

<b>Finger Type</b>	
Style	Ident.
Without Bore	<b>00</b>
With Bore	<b>01</b>



**address:**  
**GMG** – Gesellschaft für modulare  
 Greifersysteme mbH  
 Rödingerweg 8H  
 D-59494 Soest  
 Germany

**phone:**  
 +49 (0)2921 – 4062  
**fax:**  
 +49 (0)2921 - 4042

**e-mail:**  
 info@gmg-system.com  
**homepage:**  
 http://www.gmg-system.com